



KWSC Safeguarding Policy

| | |
|---------------------|-----------|
| Version: | 1.1 |
| Date Agreed: | June 2024 |
| Review Date: | June 2025 |

Contents

| | |
|--|----|
| Kielder Water Sailing Club Safeguarding Policy and Procedures..... | 2 |
| What is child abuse?..... | 3 |
| KWSC Changing Room policy..... | 6 |
| Reporting Procedures..... | 7 |
| KWSC – Safeguarding and Child Protection referral form..... | 9 |
| KWSC – Club Code of Conduct..... | 10 |
| RYA Instructor Code of Conduct..... | 12 |
| Appendix C – RYA Coach Code of Ethics and Conduct..... | 13 |
| KWSC – Good Practice Guide..... | 14 |
| KWSC – Reference request..... | 15 |



Kielder Water Sailing Club Safeguarding Policy and Procedures

Revised October 2023

Policy Statement

Kielder Water Sailing Club (KWSC) is committed to safeguarding children taking part in its activities from physical, sexual or emotional harm, neglect or bullying. We recognise that the safety, welfare and needs of the child are paramount and that any child, irrespective of age, disability, race, religion or belief, sex, sexual or gender identity or social status, has a right to protection from discrimination and abuse.

KWSC takes all reasonable steps to ensure that, through safe recruitment, appropriate operating procedures and training, it offers a safe and fun environment to children taking part in its events and activities.

For the purposes of this policy anyone under the age of 18 should be considered as a child. All members of the Club should be aware of the policy.

Club Welfare Officer

The Club Welfare Officer is: Richard Hearn
(07840814962, rihearn@doctors.org.uk)

Volunteers

All Club volunteers whose role brings them into regular contact with young people will be asked to provide references. The Club Welfare Officer and those regularly instructing, coaching or supervising young people will also be asked to apply for an Enhanced Criminal Records Disclosure, with Barred List check if appropriate.

Good Practice

All members of the Club should follow the good practice guidelines (*see KWSC Good Practice document*) and agree to abide by the Club Code of Conduct (*see KWSC Code of Conduct document*) and the RYA Racing Charter contained in the Racing Rules of Sailing. Those working or volunteering with young people should be aware of the guidance on recognising abuse (*see RYA Appendix A*).

Adults are requested not to enter the showers and changing rooms at times when children are changing before or after junior/youth training or racing. If this is unavoidable it is advised that they are accompanied by another adult.

The Club will seek consent from parents/carers via Webcollect, at the time of booking, before taking photos or video of a child at an event or training session or publishing such images. Parents and spectators should be prepared to identify themselves if requested and state their purpose for photography/filming. If the Club publishes images of children, no identifying information other than names will be included. Any concerns about inappropriate or intrusive photography or the inappropriate use of images should be reported to the Club Welfare Officer.

Concerns

Anyone who is concerned about a young member's or participant's welfare, either outside the sport or within the Club, should inform the Club Welfare Officer immediately, in strict confidence. The Club Welfare Officer will follow the attached procedures (*see RYA Flowcharts 1 and 2*).

Any member of the Club failing to comply with the Safeguarding policy or any relevant Codes of Conduct may be subject to disciplinary action.

What is child abuse?

Revised Jan 2019

(Based on the statutory guidance 'Working Together to Safeguard Children' 2018)

Abuse and neglect are forms of maltreatment of a child. Somebody may abuse or neglect a child by inflicting harm, or by failing to act to prevent harm. Children may be abused in a family or in an institutional or community setting by those known to them or, more rarely, by others (including via the internet). They may be abused by an adult or adults, or another child or children.

Physical abuse may involve adults or other children inflicting physical harm:

- hitting, shaking, throwing, poisoning, burning or scalding, drowning or suffocating
- giving children alcohol or inappropriate drugs
- a parent or carer fabricating the symptoms of, or deliberately inducing, illness in a child
- in sport situations, physical abuse might also occur when the nature and intensity of training exceeds the capacity of the child's immature and growing body.

Emotional abuse is the persistent emotional maltreatment of a child such as to cause severe and persistent adverse effects on the child's emotional development. It may involve:

- conveying to a child that they are worthless, unloved or inadequate
- not giving the child opportunities to express their views, deliberately silencing them or 'making fun' of what they say or how they communicate
- imposing expectations which are beyond the child's age or developmental capability
- overprotection and limitation of exploration and learning, or preventing the child from participating in normal social interaction
- allowing a child to see or hear the ill-treatment of another person
- serious bullying (including cyber bullying), causing children frequently to feel frightened or in danger
- the exploitation or corruption of children
- emotional abuse in sport might also include situations where parents or coaches subject children to constant criticism, bullying or pressure to perform at a level that the child cannot realistically be expected to achieve.

Some level of emotional abuse is involved in all types of maltreatment of a child.

Sexual abuse. Sexual abuse involves an individual (male or female, or another child) forcing or enticing a child or young person to take part in sexual activities, whether or not the child is aware of what is happening, to gratify their own sexual needs. The activities may involve:

- physical contact (eg. kissing, touching, masturbation, rape or oral sex)
- involving children in looking at, or in the production of, sexual images
- encouraging children to behave in sexually inappropriate ways or watch sexual activities
- grooming a child in preparation for abuse (including via the internet)
- sport situations which involve physical contact (eg. supporting or guiding children) could potentially create situations where sexual abuse may go unnoticed. Abusive situations may also occur if adults misuse their power and position of trust over young people.

Neglect is the persistent failure to meet a child's basic physical and/or psychological needs, likely to result in the serious impairment of the child's health or development. Neglect may involve a parent or carer failing to:

- provide adequate food, clothing and shelter
- protect a child from physical and emotional harm or danger
- ensure adequate supervision
- ensure access to appropriate medical care or treatment
- respond to a child's basic emotional needs
- neglect in a sport situation might occur if an instructor or coach fails to ensure that children are safe, or exposes them to undue cold or risk of injury.

Child sexual exploitation is a form of child sexual abuse. It occurs where an individual or group takes advantage of an imbalance of power to coerce, manipulate or deceive a child or young person under the age of 18 into sexual activity in exchange for something the victim needs and wants (eg. attention, money or material possessions, alcohol or drugs), and/or for the financial advantage or increased status of the perpetrator or facilitator. The victim may have been sexually exploited even if the sexual activity appears consensual. Child sexual exploitation can also occur online without involving physical contact.

Extremism goes beyond terrorism and includes people who target the vulnerable - including the young - by seeking to: sow division between communities on the basis of race, faith or denomination; justify discrimination eg. towards women and girls; persuade others that minorities are inferior; or argue against the primacy of democracy and the rule of law in our society.

Bullying (not included in 'Working Together' but probably more common in a sport situation than some of the other forms of abuse described above). Bullying (including online bullying, for example via text or social media) may be seen as deliberately hurtful behaviour, usually repeated or sustained over a period of time, where it is difficult for those being bullied to defend themselves. The bully is often another young person. Although anyone can be the target of bullying, victims are typically shy, sensitive and perhaps anxious or insecure. Sometimes they are singled out for physical reasons – being overweight or physically small, being gay or lesbian, having a disability or belonging to a different race, faith or culture.

Bullying can include:

- physical pushing, kicking, hitting, pinching etc.
- name calling, sarcasm, spreading rumours, persistent teasing and emotional torment through ridicule, humiliation or the continual ignoring of individuals
- posting of derogatory or abusive comments, videos or images on social network sites
- racial taunts, graffiti, gestures, sectarianism
- sexual comments, suggestions or behaviour
- unwanted physical contact.

The acronym STOP – Several Times On Purpose - can help you to identify bullying behaviour.

Recognising Abuse

It is not always easy, even for the most experienced carers, to spot when a child has been abused. However, some of the more typical symptoms which should trigger your suspicions would include:

- unexplained or suspicious injuries such as bruising, cuts or burns, particularly if situated on a part of the body not normally prone to such injuries
 - sexually explicit language or actions
 - a sudden change in behaviour (eg. becoming very quiet, withdrawn or displaying sudden outbursts of temper)
 - the child describes what appears to be an abusive act involving him/her
 - a change observed over a long period of time (eg. the child losing weight or becoming increasingly dirty or unkempt)
 - a general distrust and avoidance of adults, especially those with whom a close relationship would be expected
 - an unexpected reaction to normal physical contact
 - difficulty in making friends or abnormal restrictions on socialising with others.
-

It is important to note that a child could be displaying some or all of these signs, or behaving in a way which is worrying, without this necessarily meaning that the child is being abused. Similarly, there may not be any signs, but you may just feel that something is wrong. If you have noticed a change in the child's behaviour, first talk to the parents or carers. It may be that something has happened, such as a bereavement, which has caused the child to be unhappy.

If you are concerned

If there are concerns about sexual abuse or violence in the home, talking to the parents or carers might put the child at greater risk. If you cannot talk to the parents/carers, consult your organisation's designated Welfare/Safeguarding Officer or the person in charge. It is this person's responsibility to make the decision to contact Children's Social Care Services or the Police. It is NOT their responsibility to decide if abuse is taking place, BUT it is their responsibility to act on your concerns.

KWSC Changing Room policy

KWSC has separate male and female changing facilities and unisex disabled facilities. The club recommends that children be accompanied in the changing facilities by a responsible adult and that children over the age of 8 use the changing room of their gender.

The disabled facilities can be used where this presents challenge.

Adults are requested not to enter the showers and changing rooms at times when children are changing before or after junior/youth training or racing. If this is unavoidable it is advised that they are accompanied by another adult.

If it is essential, in an emergency situation, for a male to enter a female changing area or vice versa, it is advised that they are accompanied by another adult of the opposite sex.

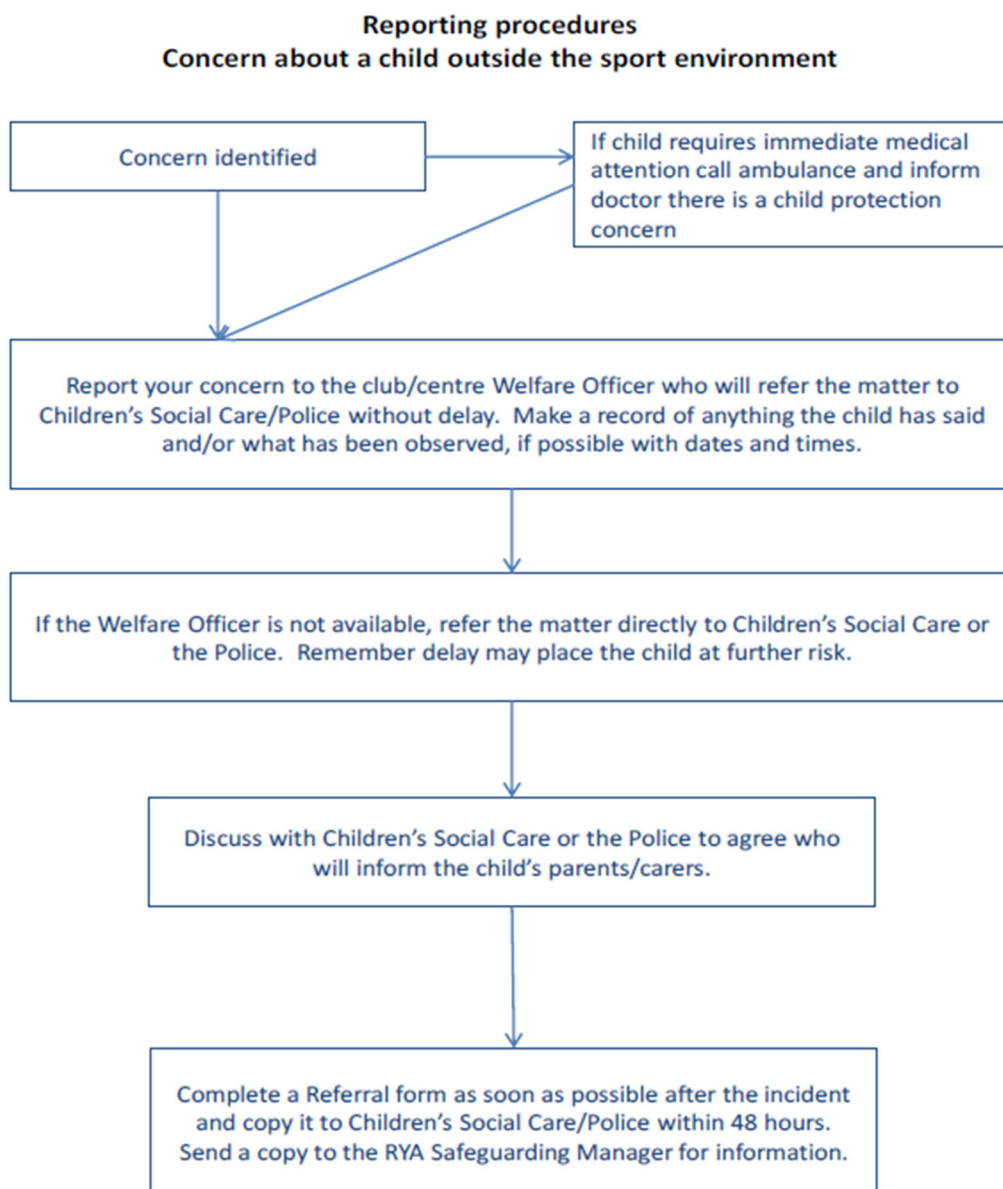
Reporting Procedures

Revised Jan 2015

If you are uncertain what to do at any stage, contact the RYA's Safeguarding and Equality Manager on 023 8060 4104 or the NSPCC free 24-hour helpline 0808 800 5000.

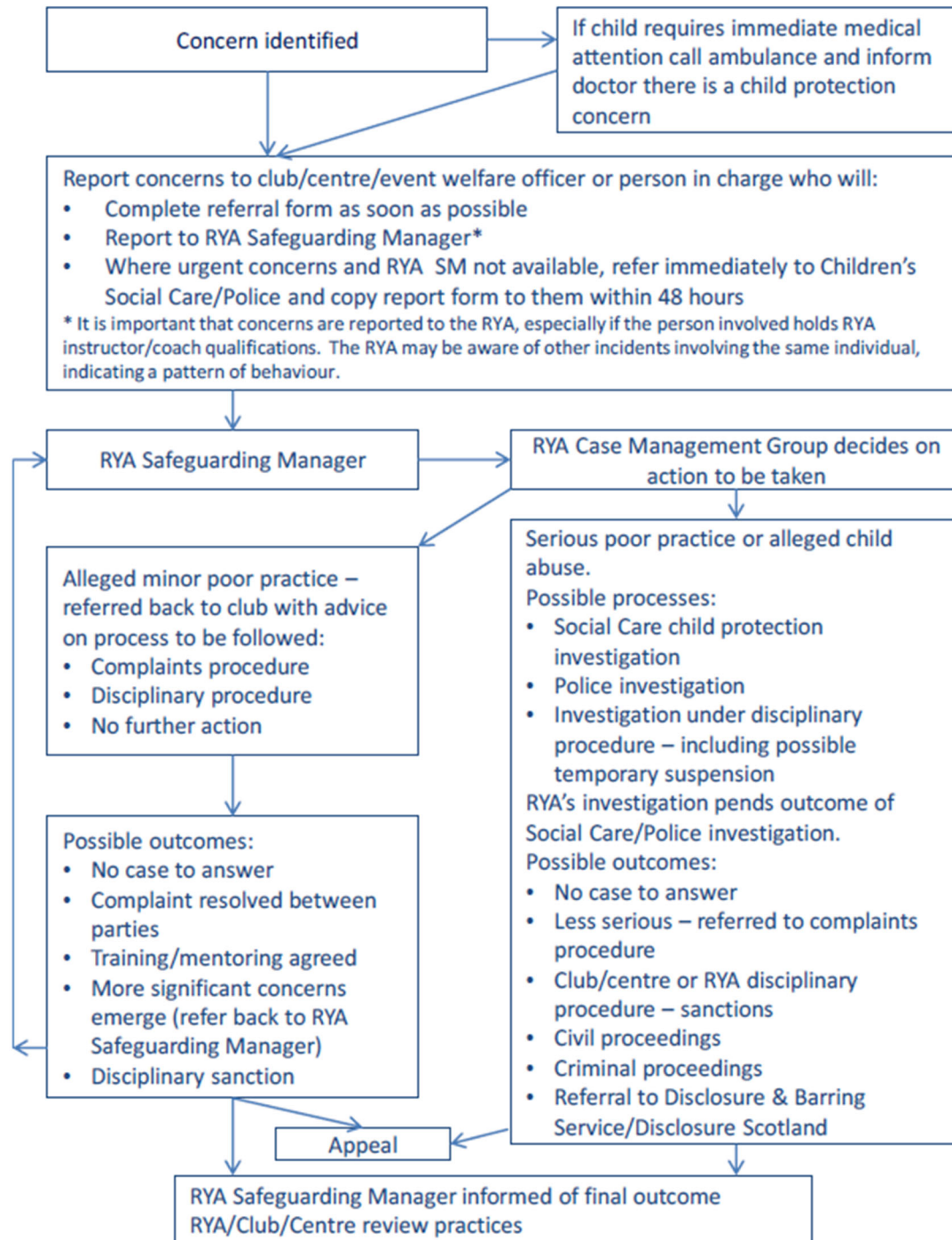
Details of Children's Social Care departments and emergency duty teams are listed on local authority websites and in local phone books. If you are unable to find the appropriate contact number, call the RYA's Safeguarding and Equality Manager or, if a child is at immediate risk, the Police.

Flowchart 1



Flowchart 2

Reporting procedures Concern about the behaviour of someone at a club/centre



KWSC – Safeguarding and Child Protection referral form

Revised October 2023

| | |
|---|--|
| Date and time of incident | |
| Name and position of person about whom report, complaint or allegation is made | |
| Name and age of child involved | |
| Name of club or organisation (if relevant) | |
| Nature of incident, complaint or allegation (continue on separate page if necessary). | |
| Action taken by organisation (continue on separate page if necessary) | |
| If Police or Children's Social Care Services contacted, name, position and telephone number of person handling case | |
| Name, organisation and position of person completing form | |
| Contact telephone number and e-mail address | |
| Signature of person completing form | |
| Date and time form completed | |
| Name and position of organisation's child protection/welfare officer or person in charge (if different from above) | |
| Contact telephone number and e-mail address | |

This form should be copied, marked 'Private and Confidential', to the RYA Safeguarding and Equality Manager, Jackie Reid, RYA House, Ensign Way, Hamble, Southampton, SO31 4YA, e-mail safeguarding@rya.org.uk and to the statutory authorities (if they have been informed of the incident) within 48 hours of the incident.

KWSC – Club Code of Conduct

Revised October 2023

It is the policy of Kielder Water Sailing Club (KWSC) that all participants, coaches, instructors, officials, parents and volunteers show respect and understanding for each other, treat everyone equally within the context of the sport and conduct themselves in a way that reflects the principles of the club. The aim is for all participants to enjoy their sport and to improve performance.

Abusive language, swearing, intimidation, aggressive behaviour or lack of respect for others and their property will not be tolerated and may lead to disciplinary action.

Participants - young sailors, windsurfers and powerboaters

- Listen to and accept what you are asked to do to improve your performance and keep you safe
- Respect other participants, coaches, instructors, officials and volunteers
- Abide by the rules and play fairly
- Do your best at all times
- Never bully others either in person, by phone, by text or online
- Take care of all property belonging to other participants, the club or its members

Parents

- Support your child's involvement and help them enjoy their sport
 - Help your child to recognise good performance, not just results
 - Never force your child to take part in sport
 - Never punish or belittle a child for losing or making mistakes
 - Encourage and guide your child to accept responsibility for their own conduct and performance
 - Respect and support the coach
 - Accept officials' judgements and recognise good performance by all participants
 - Use established procedures where there is a genuine concern or dispute
 - Inform the club or event organisers of relevant medical information
 - Ensure that your child wears suitable clothing and has appropriate food and drink
 - Provide contact details and be available when required
 - Take responsibility for your child's safety and conduct in and around the clubhouse
-

Coaches, Instructors, Officials and Volunteers

- Consider the welfare and safety of participants before the development of performance
- Encourage participants to value their performance and not just results
- Promote fair play and never condone cheating
- Ensure that all activities are appropriate to the age, ability and experience of those taking part
- Build relationships based on mutual trust and respect
- Work in an open environment
- Avoid unnecessary physical contact with young people
- Be an excellent role model and display consistently high standards of behaviour and appearance
- Do not drink alcohol, smoke or vape when working directly with young people
- Communicate clearly with parents and participants
- Be aware of any relevant medical information
- Follow RYA and club/class guidelines and policies
- Holders of RYA Instructor and Coach qualifications must also comply with the RYA Code of Conduct
- Holders of RYA Race Official appointments must also comply with the RYA Race Officials Code of Conduct.

If you are concerned that someone is not following the Code of Conduct, you should inform your Club Welfare Officer or the person in charge of the activity

RYA Instructor Code of Conduct

Revised Feb 2014

RYA Instructor Code of Conduct for RYA Instructors, Coach Assessors, Trainers and Examiners

This document outlines the code of conduct under which all holders of RYA instructor qualifications and RYA training appointments (hereafter referred to as instructors) are required to comply. The code of conduct is intended to make clear to all participants, instructors and RYA appointment holders the high standards to which all are expected to conform. Instructors must:

- If working with people under the age of 18, read and understand the Child Protection Policy as detailed on the RYA website at www.rya.org.uk
- Respect the rights, dignity and worth of every person and treat everyone equally within the context of their sport.
- Place the wellbeing and safety of the student above the development of performance or delivery of training.
- They should follow all guidelines laid down by the RYA with regards specific training or coaching programmes.
- Hold appropriate insurance cover either individually or through the training centre in which they are working.
- Not develop inappropriate working relationships with students (especially children). Relationships must be based on mutual trust and respect and not exert undue influence to obtain personal benefit or reward.
- Encourage and guide students to accept responsibility for their own behaviour and performance.
- Hold relevant up to date governing body qualifications as approved by the RYA.
- Ensure that the activities they direct or advocate are appropriate for the age, maturity, experience and ability of the individual.
- At the outset, clarify with students (and where appropriate their parents) exactly what is expected of them and what they are entitled to expect.
- Always promote the positive aspects of the sport (eg courtesy to other water users).
- Consistently display high standards of behaviour and appearance.
- Not do or neglect to do anything which may bring the RYA into disrepute.
- Act with integrity in all customer and business to business dealings pertaining to RYA training.
- Not teach or purport to provide RYA courses or RYA certification outside of the framework of an RYA recognised training centre
- Notify the RYA immediately of any court imposed sanction that precludes the instructor from contact with specific user groups (for example children and vulnerable adults).
- Not carry out RYA training, examining or coaching activities whilst under the influence of alcohol or drugs.

Failure to adhere to the RYA Instructor Code of Conduct may result in the suspension or withdrawal of RYA qualifications or appointments.

RYA Coach Code of Ethics and Conduct

Revised Dec 2018

Sports Coaching helps the development of individuals through improving their performance.

This is achieved by:

1. Identifying and meeting the needs of individuals.
2. Improving performance through a progressive programme of safe, guided practice, measured performance and/or competition.
3. Creating an environment in which individuals are motivated to maintain participation and improve performance.

Coaches should comply with the principles of good ethical practice listed below.

1. All RYA Coaches working with sailors under the age of 18 must have read and understood the RYA Child Protection Policy as detailed on the RYA website at www.rya.org.uk/go/safeguarding . If you are unable to access the website please contact coachingdevelopment@rya.org.uk
2. Coaches must respect the rights, dignity and worth of every person and treat everyone equally within the context of their sport.
3. Coaches must place the well-being and safety of the sailor above the development of performance. They should follow all guidelines laid down by the RYA, follow Operating Procedures and hold appropriate insurance cover.
4. Coaches must develop an appropriate working relationship with sailors based on mutual trust and respect. Coaches must not exert undue influence to obtain personal benefit or reward. In particular they must not abuse their position of trust to establish or pursue a sexual relationship with a sailor aged under 18, or an inappropriate relationship with any sailor.
5. Coaches must encourage and guide sailors to accept responsibility for their own behaviour and performance.
6. Coaches must hold up to date and nationally recognised governing body coaching qualifications.
7. Coaches must ensure that the activities they direct or advocate are appropriate for the age, maturity, experience and ability of the individual.
8. Coaches must, at the outset, clarify with sailors (and where appropriate their parents) exactly what is expected of them and what sailors are entitled to expect from their coach. A contract may sometimes be appropriate.
9. Coaches must co-operate fully with other specialists (eg. other coaches, officials, sports scientists, doctors, physiotherapists) in the best interests of the sailor.
10. Coaches must always promote the positive aspects of their sport (eg. fair play) and never condone rule violations or the use of prohibited substances.
11. Coaches must consistently display high standards of behaviour and appearance.
12. Coaches must notify the RYA immediately of any court imposed sanction that precludes the coach from contact with a specific user group (eg. children and vulnerable adults).
13. Coaches must not carry out coaching activities whilst under the influence of alcohol or drugs, or when they have received medical advice not to continue activities that are connected with their coaching (eg. driving).
14. Coaches must not behave in a way which brings the sport into disrepute.

Failure to adhere to the RYA Coach Code of Conduct may result in the suspension or withdrawal of RYA qualifications or appointments and will be dealt with in line with the RYA Coaches' Performance Guidelines. To access these Guidelines please contact coachingdevelopment@rya.org.uk

KWSC – Good Practice Guide

Revised October 2023

Good Practice Guide for Instructors, Coaches and Volunteers

This guide only covers the essential points of good practice when working with children and young people. You should also read the organisation's Child Protection Policy and Procedures which are available for reference at all times.

- Avoid spending any significant time working with children in isolation
- Do not take children alone in a car, however short the journey
- Do not take children to your home as part of your organisation's activity
- Where any of these are unavoidable, ensure that they only occur with the full knowledge and consent of someone in charge of the organisation or the child's parents
- Design training programmes that are within the ability of the individual child
- If a child is having difficulty with a wetsuit or buoyancy aid, ask them to ask a friend to help if at all possible
- If you do have to help a child, make sure you are in full view of others, preferably another adult
- Restrict communications with young people via mobile phone, e-mail or social media to group communications about organisational matters. If it's essential to send an individual message, copy it to the child's parent or carer.

You should never:

- engage in rough, physical or sexually provocative games
- allow or engage in inappropriate touching of any form
- allow children to use inappropriate language unchallenged, or use such language yourself when with children
- make sexually suggestive comments to a child, even in fun
- fail to respond to an allegation made by a child; always act
- do things of a personal nature that children can do for themselves.

It may sometimes be necessary to do things of a personal nature for children, particularly if they are very young or disabled. These tasks should only be carried out with the full understanding and consent of the child (where possible) and their parents/carers. In an emergency situation which requires this type of help, parents should be fully informed. In such situations it is important to ensure that any adult present is sensitive to the child and undertakes personal care tasks with the utmost discretion.

KWSC – Reference request

Revised October 2023

CONFIDENTIAL

(Name) has expressed an interest in working/volunteering with Kielder Water Sailing Club (KWSC) in the role of, and has given your name as a referee. This role involves substantial access to children. As an organisation committed to the protection and welfare of children, we are anxious to know if there are any reasons to be concerned about this applicant being in regular contact with children or young people.

If you agree to complete this reference, any information will be treated with due confidentiality and in accordance with relevant legislation and guidance and will only be shared with the person conducting the assessment of the applicant's suitability, should they be offered the role. We would appreciate you being candid, open and honest in your evaluation of this person.

1. How long have you known this person?
2. In what capacity?
3. What attributes does this person have which would make them suitable for this role?
.....
.....
.....

| 4. Please rate this person on the following (please tick one box for each question) Poor | Average | Good | Very good | Excellent |
|--|---------|------|-----------|-----------|
| Responsibility | | | | |
| Maturity | | | | |
| Self-motivation | | | | |
| Motivation of others | | | | |
| Commitment | | | | |
| Energy | | | | |
| Trustworthiness | | | | |
| Reliability | | | | |

5. Do you have any reason at all to be concerned about this applicant being in regular contact with children or young people? YES / NO

If you answer 'Yes' we will contact you in confidence.

Name: (please print) Tel. No:

Signed: Date:

Please return this form, marked 'Confidential' to: Richard Hearn – KWSC Welfare officer
Note: A reference is personal data and the subject is entitled to request a copy from the recipient